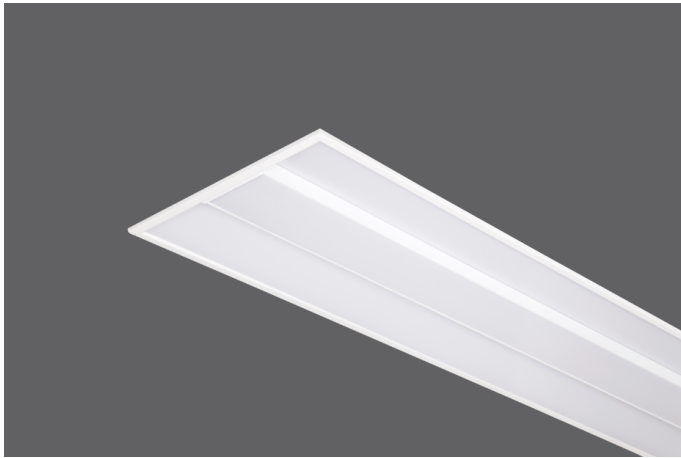


PERA



Standard Colours



OPTICAL

Direct symmetric distribution
 Beam angle 120°
 UGR<19
 Luminous efficacy >100 lm/W
 Lifetime (L90/B10): 50000 h.(tq+25°C)
 Lifetime (L80/B20): 100000 h. (tq+25°C)
 SMD LED module
 Color rendering index: CRI>80
 MacAdams SDCM 3

MECHANICAL

Sheet steel housing
 Aluminium frame
 UV stabilized opal polycarbonate diffuser
 IP40 protection degree from below
 Impact resistance IK02
 Glow-wire test resistance 650°C

ELECTRICAL

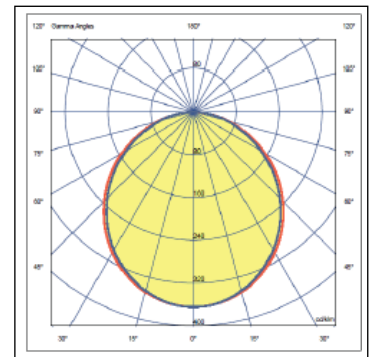
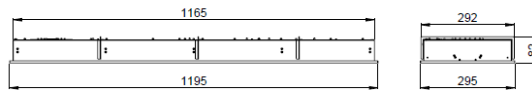
Halogen-free wiring
 220-240V-50/60Hz
 Power factor >0.95
 Constant current, Class I, isolated driver
 CE - IEC 60598-1 - EN 60598-1
 Ambient temperature from -20°C to +50°C
 On-Off Control - (Code: .N000)

OPTIONAL

DALI - (Code: .DXXX)
 1-10V - (Code: .MXXX)
 Tunable White
 Flicker-free - (Code: .FXXX)
 Emergency battery - (Code .X3HT)
 CBS connection
 Color rendering index: CRI >90
 Color temperature (K) options
 GST type connector for installation
 RAL colour selection
 Seismic security hanger

INSTALLATION

Ceiling recessed mounted.



Product Code	Power (W)	Lumen (lm)	CCT (K)	CRI	Dimensions WxLxH (mm)	Cut-Out WxL (mm)	Weight (kg)
02182.36.30.021	21	2200	3000K	Ra>80	295x595x82	275x575	2,2

All electrical values given are rated values. Luminous flux and connected electrical load are subject to an initial tolerance of +/- 10%. Tolerance of colour temperature: +/-150 K. Unless stated otherwise, the values apply to an ambient temperature of 25°C.

Any information including technical parameters and product codes may differ from standard products in catalogue & web site due to customization made per projects.

Ikizler Lighting has the right to make changes or cancellations on the products without notification. Updated information on the products can be received from our web site.