

SNOW-T



Standard Colours



Ral 9016

Ral 9006

Ral 9005



OPTICAL

Direct symmetric distribution
Beam angle 120°
UGR <22
Luminous efficacy >100 lm/W
Lifetime (L90/B10): 50000 h.(tq+25°C)
Lifetime (L80/B20): 100000 h. (tq+25°C)
SMD LED module
Color rendering index: CRI>80
MacAdams SDCM 3

MECHANICAL

Aluminium housing
Electrostatic powder painted
UV stabilized opal diffuser
IP40 protection degree
Impact resistance IK02
Glow-wire test resistance 650°C

ELECTRICAL

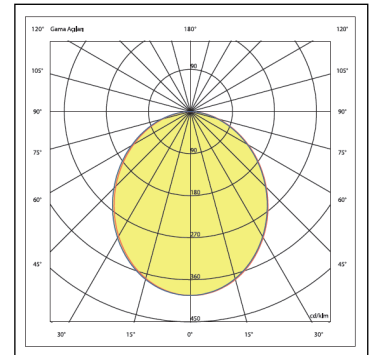
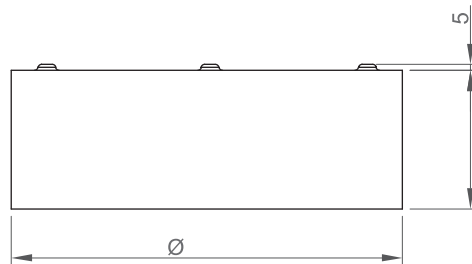
Halogen-free wiring
220-240V-50/60Hz
Power factor >0.95
Constant current, Class I, isolated driver
CE - IEC 60598-1 - EN 60598-1
Ambient temperature from -20°C to +50°C
On-Off Control - (Code: .N000)

OPTIONAL

DALI - (Code: .DXXX)
1-10V - (Code: .MXXX)
Tunable White
Flicker-free - (Code: .FXXX)
Emergency battery - (Code .X3HT)
CBS connection
UGR<19 - microprismatic diffuser (.MC)
Color rendering index: CRI >90
Color temperature (K) options
RAL colour selection

INSTALLATION

Ceiling surface mounted.



Product Code	Power (W)	Lumen (lm)	CCT (K)	CRI	Dimensions QxH (mm)	Cut-Out WxL (mm)	Weight (kg)
03170.23.30.013	14	1340	3000K	Ra>80	263x130	N/A	1,8

All electrical values given are rated values. Luminous flux and connected electrical load are subject to an initial tolerance of +/- 10%. Tolerance of colour temperature: +/-150 K. Unless stated otherwise, the values apply to an ambient temperature of 25°C.

Any information including technical parameters and product codes may differ from standard products in catalogue & web site due to customization made per projects.

Ikizler Lighting has the right to make changes or cancellations on the products without notification. Updated information on the products can be received from our web site.