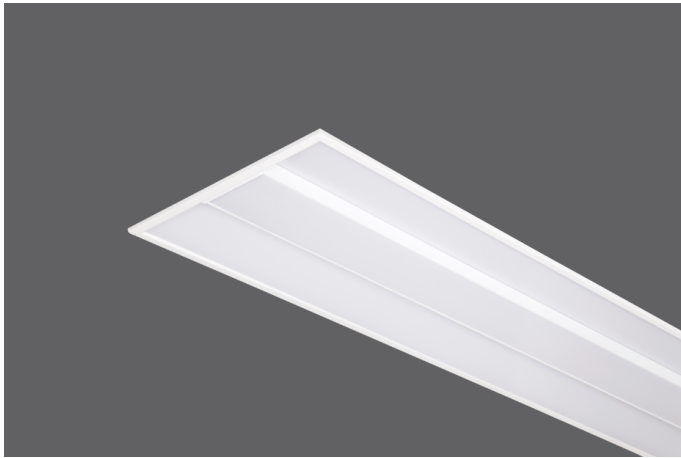


# PERA



## Standard Colours



## OPTICAL

Direct symmetric distribution  
 Beam angle 120°  
 UGR<19  
 Luminous efficacy >100 lm/W  
 Lifetime (L90/B10): 50000 h.(tq+25°C)  
 Lifetime (L80/B20): 100000 h. (tq+25°C)  
 SMD LED module  
 Color rendering index: CRI>80  
 MacAdams SDCM 3

## MECHANICAL

Sheet steel housing  
 Aluminium frame  
 UV stabilized opal polycarbonate diffuser  
 IP40 protection degree from below  
 Impact resistance IK02  
 Glow-wire test resistance 650°C

## ELECTRICAL

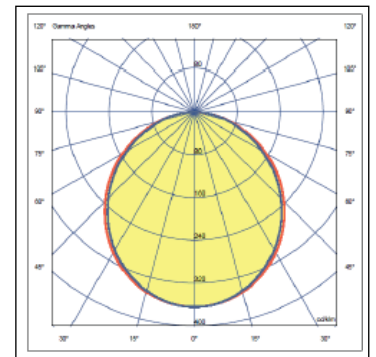
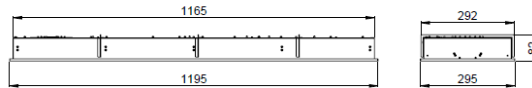
Halogen-free wiring  
 220-240V-50/60Hz  
 Power factor >0.95  
 Constant current, Class I, isolated driver  
 CE - IEC 60598-1 - EN 60598-1  
 Ambient temperature from -20°C to +50°C  
 On-Off Control - (Code: .N000)

## OPTIONAL

DALI - (Code: .DXXX)  
 1-10V - (Code: .MXXX)  
 Tunable White  
 Flicker-free - (Code: .FXXX)  
 Emergency battery - (Code .X3HT)  
 CBS connection  
 Color rendering index: CRI >90  
 Color temperature (K) options  
 GST type connector for installation  
 RAL colour selection  
 Seismic security hanger

## INSTALLATION

Ceiling recessed mounted.



Product Code	Power (W)	Lumen (lm)	CCT (K)	CRI	Dimensions WxLxH (mm)	Cut-Out WxL (mm)	Weight (kg)
02182.31.30.041	42	4400	3000K	Ra>80	295x1195x82	275x1175	3,8

All electrical values given are rated values. Luminous flux and connected electrical load are subject to an initial tolerance of +/- 10%. Tolerance of colour temperature: +/-150 K. Unless stated otherwise, the values apply to an ambient temperature of 25°C.

Any information including technical parameters and product codes may differ from standard products in catalogue & web site due to customization made per projects.

Ikizler Lighting has the right to make changes or cancellations on the products without notification. Updated information on the products can be received from our web site.